



*Life blossoms to fill the air  
with a sweet fragrance*



*Joy increases a degree  
With the ticking of every second.*

*As the minutes come full circle,  
Hours go by,  
Stumbling upon precious moments  
Of today, that with time, mature into  
Tomorrow's happy memories.*

*The hours role into days  
And with each set of 30, sometimes 31,  
Comes new promise for the years ahead.*

*When the wonderful future in store for you at Mohan Pride  
Looks back fondly, it will find the days gone by  
In smiling albums and happy frames that cover your walls.*

*Find your cozy space  
in the sprawling layout.*





*Your home in the lap of luxury.*

Changing the lifestyle and revolutionizing the skyline of Kalyan is the **Mohan Group**. Today, **Mohan Pride** stands tall as a lavishly and elegantly designed spread that comprises **5** well planned towers of **15** storeys each.

Each tower offers 2, 3 and 4 BHK apartments that overlook the lush green gardens and temple.

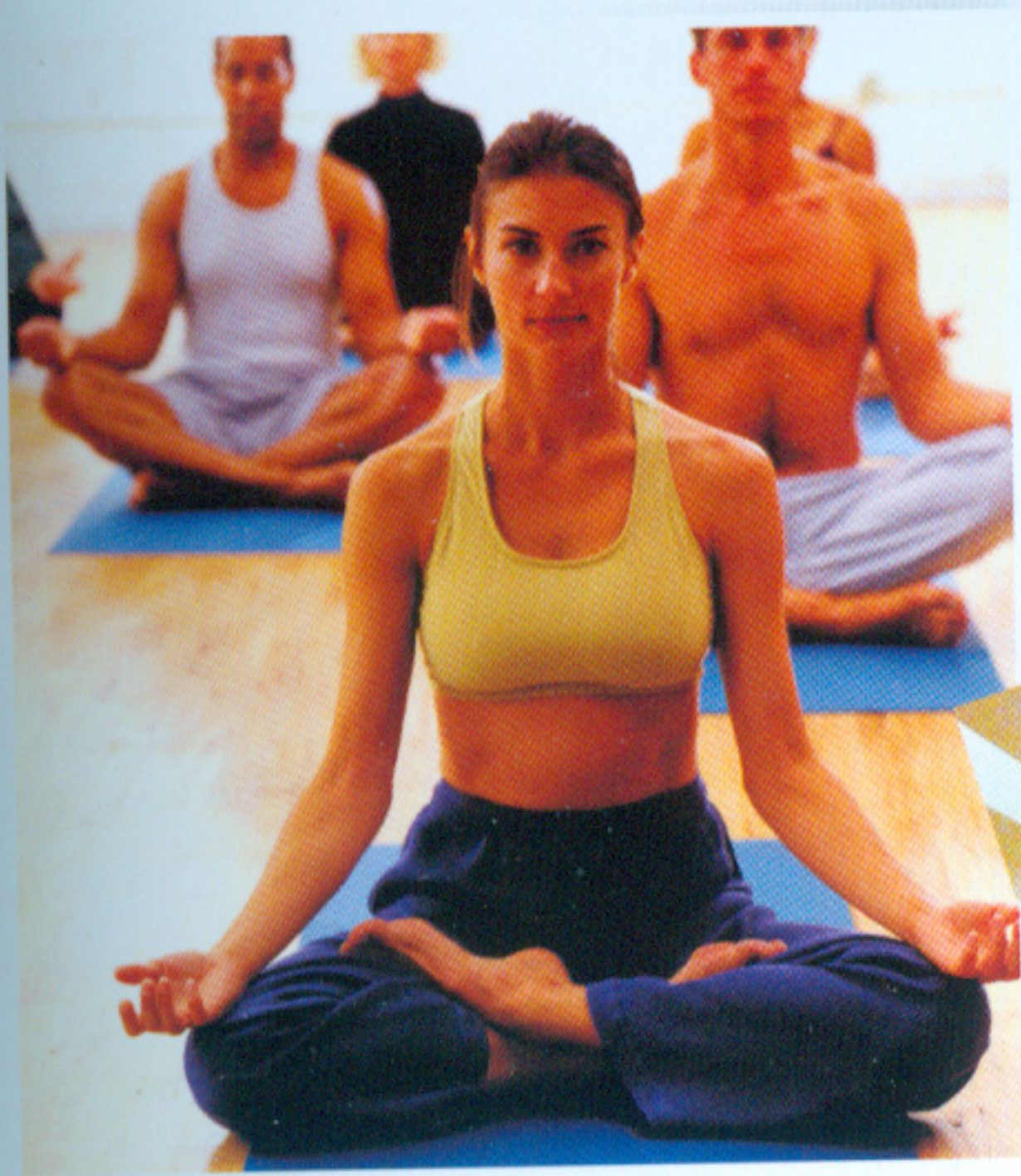
The swimming pool and children's play area offer relaxation and a source of entertainment.

Take pride in living well, at **Mohan Pride**.



*Enjoy a blue-sky holiday all year round.*





**Vibrant environment created by:**

- Construction on 30% land and 70% open area.
- Earthquake resistance RCC design construction with attractive elevation.
- Elegant double height entrance lobby & Air-conditioned Lounge for Guests.
- Lovely landscaped garden.
- Swimming pool and a kid's pool too, to keep you cool.
- Club house with indoor games like TT, Chess, Carom to suit your taste.
- A pool table to match your pride.
- A well equipped Gym to keep you fit and trim.
- Children's play park for Fun n Frolic.
- Shiv Temple to connect with divine.
- Hi-Tech security system with Inter-communication facilities.
- Ample parking space to soothe your nerves.
- Adequate water supply.





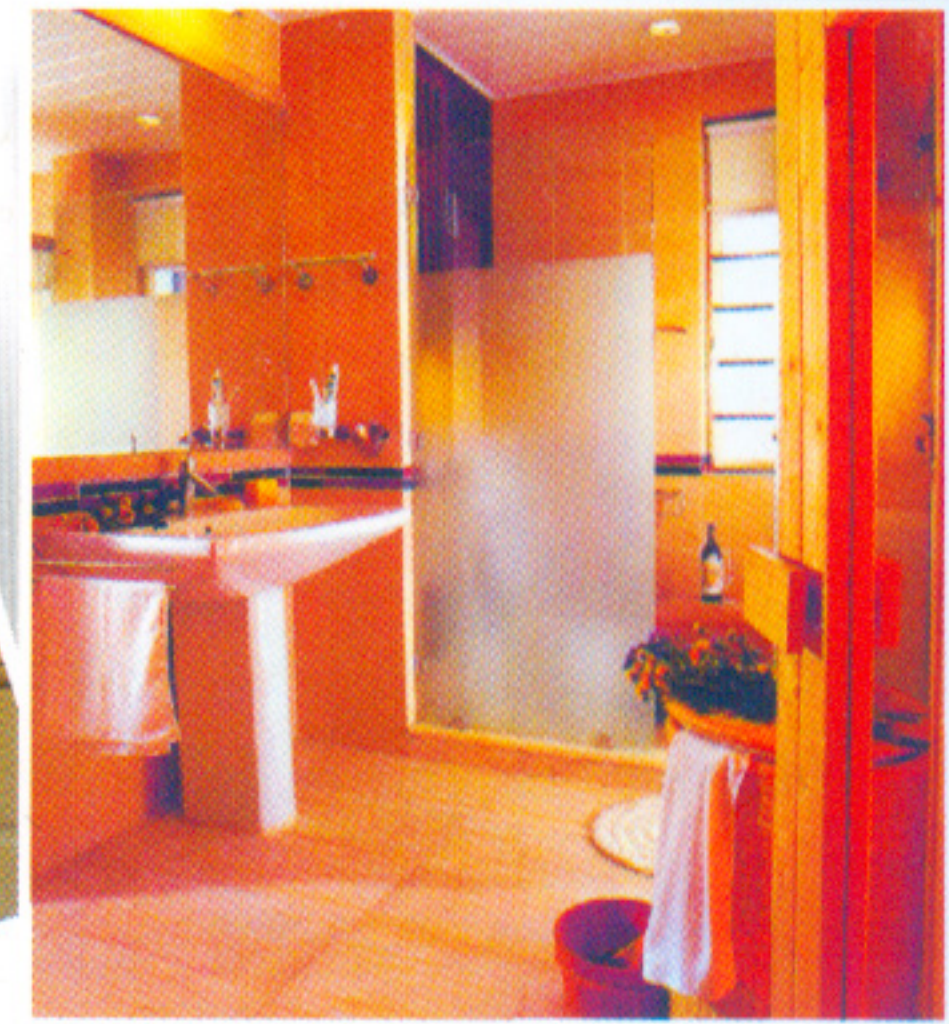


M O H A N  
P R I D E



*Comfortably cushioned by luxury.*





- Italian Marble finish 2 x 2 Vitrified tiles flooring in entire flat
- Fully tiled kitchen
- Black Granite Kitchen Platform with Stainless Steel Sink and service platform
- All bathrooms beautifully designed with door height premium quality tiles
- Super brand Jaquar diverter fittings or equipment in bathrooms
- Branded modular switches
- Concealed plumbing and wiring
- P. O. P. finished walls painted with acrylic paints
- Cornice mouldings in the entire Hall
- Elegant French windows with Marble sills
- Marble door frames in bathrooms
- A.C. provision with concealed electrical fittings
- Heavy section powder coated Aluminium windows with good quality glass - openable on one side
- Wiring of ISI quality & provisions for TV & Telephone points in entire flat
- Dry area in kitchen with provision of washing machine with concealed plumbing
- Sturdy doors of 7.5 ft. height with laminate on both side, moulding and polish
- Elegant bathrooms having wash basins with counter in master bathroom
- Wall mounted E.W.C. with Hindware sanitary fittings / pendulum wash basin
- Automatic high speed Lift with generator backup
- All flats are designed as per Vaastu



DAISY  
ST.+15

CLOVER  
ST.+15

IRIS  
ST.+15

SWIMMING  
POOL

CLUBHOUSE

MANDIR

podium

SHOPPING PLAZA  
GR.FL.

R O A D

# M O H A N P R I D E

North



**FLORA**  
ST.+ 15

**BASIL**  
ST.+15



CULTURAL WELFARE CENTRE

PARKING  
RESERVATION

*Life looks wonderful when you look at it from this perspective.*





M O H A N  
P R I D E







# COVER

TYPE	AREA Sq. Ft.
BHK	1060
BHK	1090
BHK	1330

h, 6th, 10th,  
th FLOOR PLAN  
PE : A2

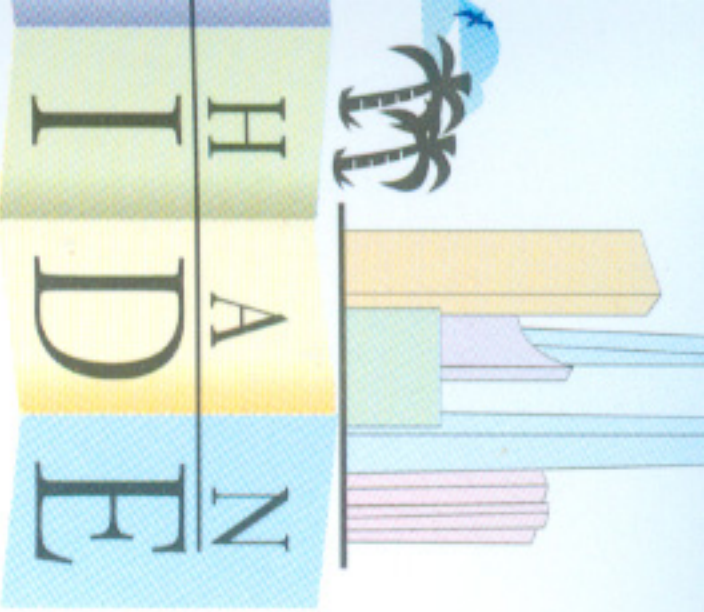


# COVER

TYPE	AREA Sq.Ft.
BHK	1060
BHK	990
BHK	1330

7th, 9th, 11th,  
FLOOR PLAN  
PE: A2





# WISY SIL

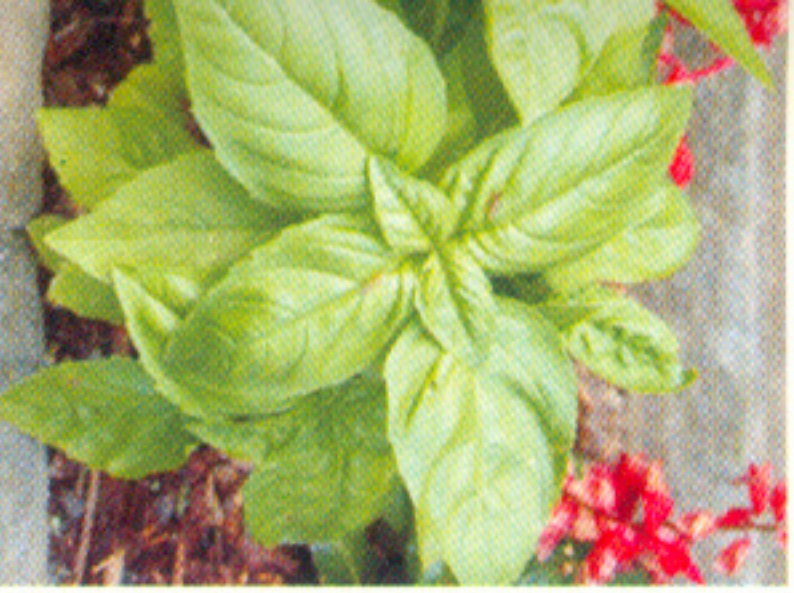
TYPE	AREA Sq. Ft.
BHK	1060
BHK	990
BHK	860

h, 7th, 9th, 11th,  
h FLOOR PLAN  
: C1 & C2



TYPE AREA Sq. Ft.	
BHK	1060
BHK	1090
BHK	860

th, 10th, 12th,  
LOOR PLAN  
: C1 & C2





# ORIS ORA

TYPE	AREA Sq. Ft.
2 BHK	1060
3 BHK	1090
4 BHK	1330

6th, 8th, 10th,  
14th FLOOR PLAN  
E : A1 & A3



TYPE	AREA Sq.Ft.
BHK	1060
BHK	990
BHK	1330

5th, 7th, 9th,  
5th FLOOR PLAN  
: A1 & A3





North

